

DrayTek Vigor560

Quick Start Guide



WLAN
Up to **54** Mbps

Follow the quick steps to install your PC card.

⚠ Important: We strongly recommend install the software first before you plug the card into your computer.

1.Utility & Driver Installation

- Turn on your computer.
- Insert the CD into your CD-ROM drive.
- The Install shield wizard will appear.(as **image 1.1**)



image 1.1

- If the CD Autorun function does not appear, go to your Windows **Start** menu and choose "**Run**", type "**D:\Setup.Exe**" ("**D**" represents your computer CD-ROM driver letter), and click "**OK**". (as **image 1.2**)

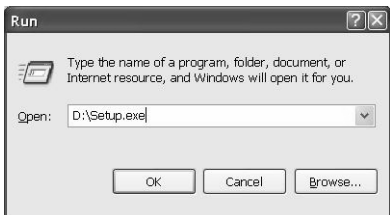


image 1.2

- e. Click "**Install VIGOR560 Driver**" to begin the Installation.
- f. Click "**Finish**" to finish the installing the Driver & Utility.

2.Hardware Installation

- a.Insert Wireless Notebook Adapter into available Cardbus slot on your computer. Your computer will appear **Found New Hardware Wizard** screen.
- b.Select "**Install the software automatically (Recommended)**", and then click "**Next**".
- c.Windows will remind you that the driver has not passed Windows Logo testing. This is normal, and it has been verified that this adapter does work with Windows. Click "**Continue Anyway**".
- d.Click "**Finish**" to finalize the installation.

3.Installation is complete!

After finished installation, configuration utility will start and the utility icon will appear in the bottom right hand corner of desktop screen.